

# School Closure

Researchers of Creative Change

Andrea, Aniyah, DeAnna, Edith, Jerrhonda, Laieyah

May 8, 2024

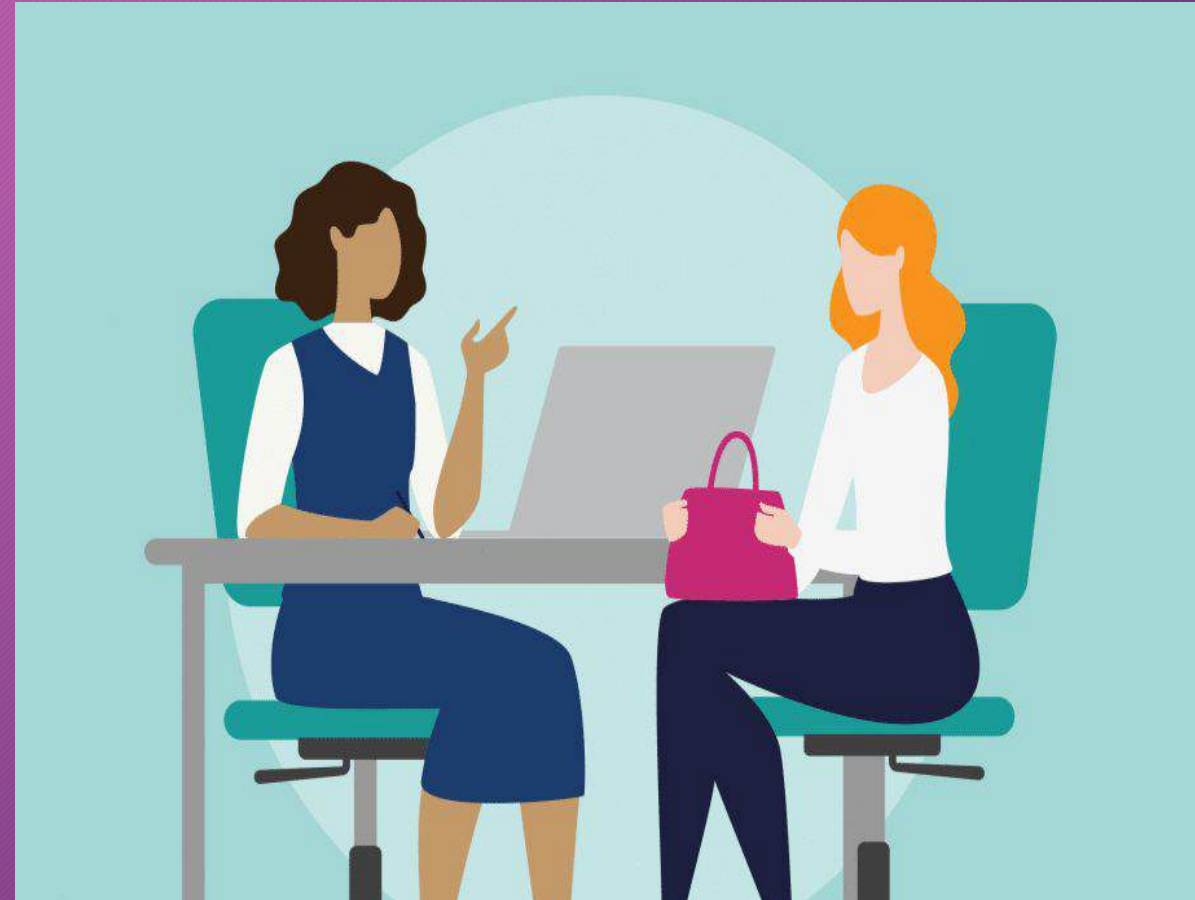
# Focus Question

- How has school closure affected students' and teachers' daily lives?



# Methods

- Interviewed 6 teachers/staff
- Surveyed 49 students



# Results of the student survey

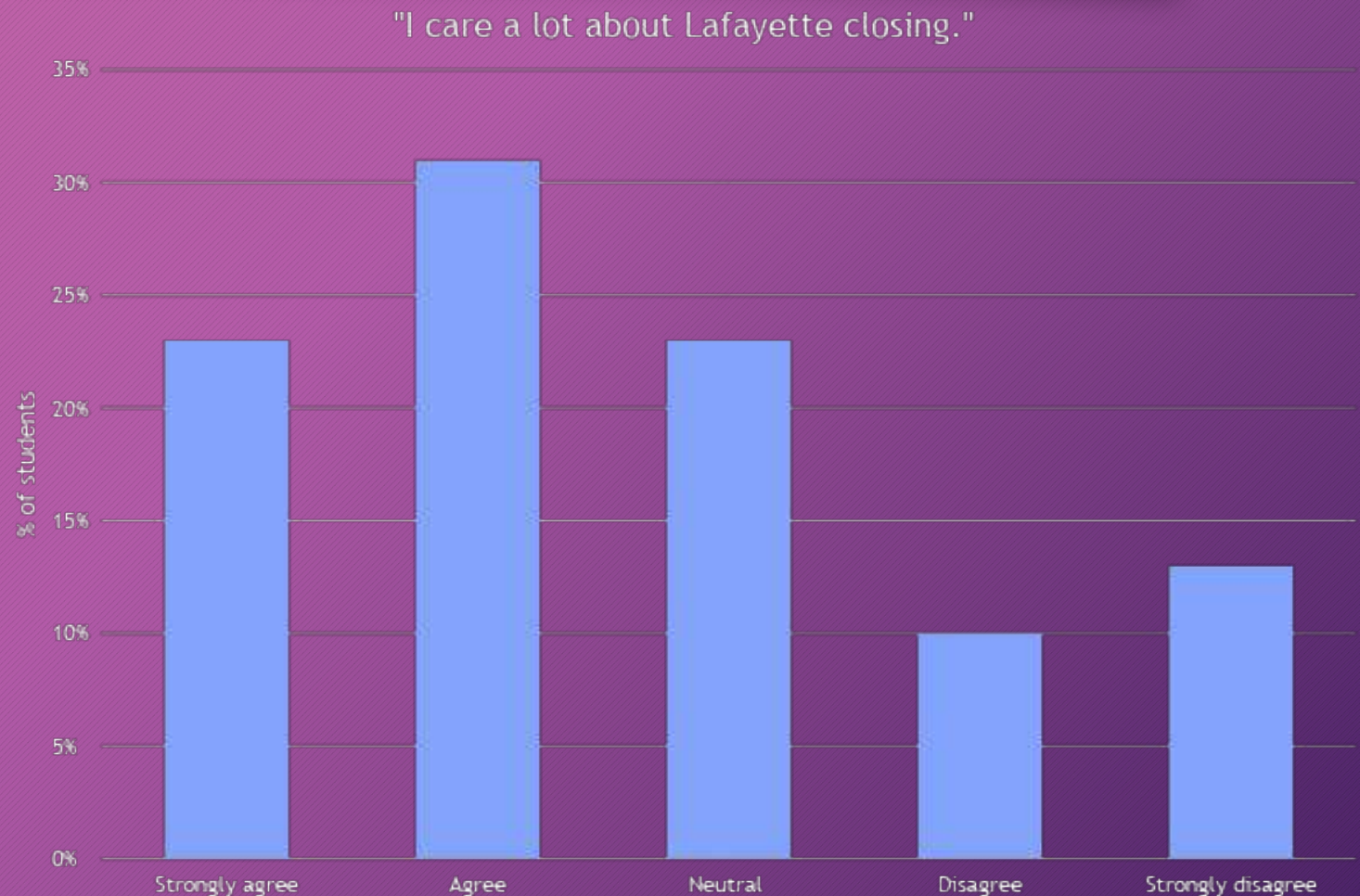
Students' initial reaction to the school closing down were:

- 62% said shocked
- 49% said surprised
- 41% said sadness
- 22% said anxiety
- And 22% said joy

These numbers do not add to 100% because students could select more than one option.

# More Survey Results

- 54% of students agreed or strongly agreed that they cared a lot that Lafayette is closing.

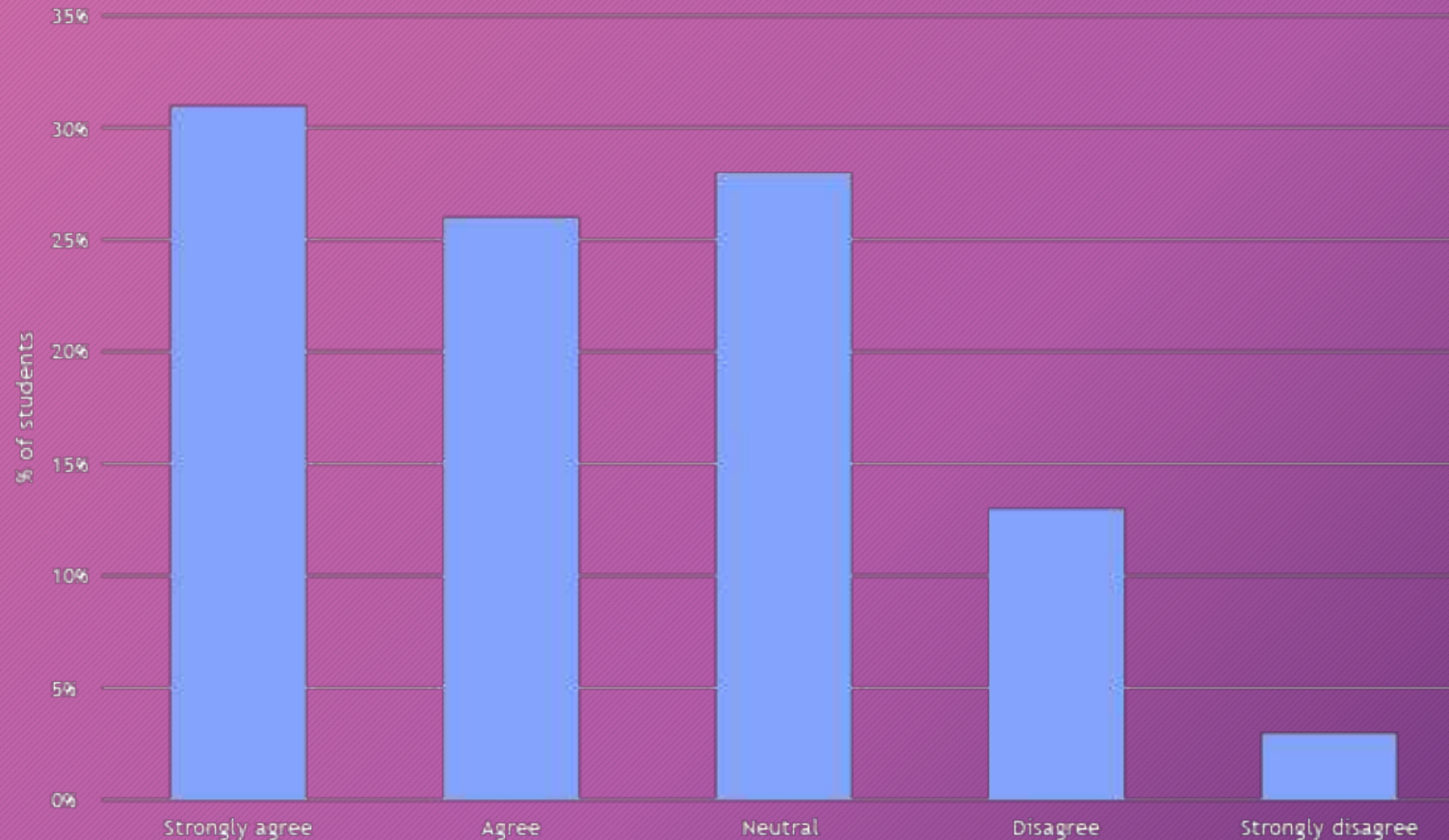


# Students disagreed about if teachers' behavior has changed.

- “The teachers here used the closing against us.”
- “Teachers' behavior has changed by them caring less.”
- “They seem sad to leave us.”

# I have witnessed students' behavior change after hearing Lafayette is closing.

Students' behavior has changed



- 57% of students agreed or strongly agreed that students' behavior has changed since the announcement.

# I have witnessed students' behavior change after hearing Lafayette closing.

- “ Most students are sad because they have been here since the beginning of their childhood.”
- “ Students started to care less about getting an education .”
- “Students are happy and starting not to care about nothing.”
- “Students' behavior changed strongly, many of us cried because this is where we all started and we wanted a chance to end it here too “



# Do you think the school you will go to next year will be better than Lafayette?

- 35% said definitely and 32% said probably

Do you think your next school will be better than Lafayette?



■ Definitely ■ Probably ■ Unsure ■ No

# Do you think it was the right decision to close down Lafayette?

- 32% of people said NO
- “No because this is the only school I have been to in my life and this is my childhood school since pre-k.”
- “Yes, because the school grade is bad, the kids are bad, and there’s barely any teaching going on.”

# Teacher/ staff interviews

- Most teachers said the school is shutting down because of lack of consistency and low LEAP scores
- “But then also the generation is different. Students care a lot less, so getting them to care more is a tough job when you already getting battered and bruised by data, lesson plans, curriculum meetings, all random meetings for no reason and then you got to fill in because we don't have the staff.”



**2022-2023  
LEAP Score Results**

# Poor communication

- Some teachers/ staff felt as if they weren't kept informed during the process of Lafayette closing down
- “I felt like I was blindsided.”
- “I felt like we were informed, but I felt like a lot of it was after the fact. I didn't feel like it was in real time as it was going on.”
- “I saw our students grow academically, so I'm not totally clear about the dynamics of how they came up with this, [deciding] the school has to close.”

# Recommendations

- If the district is thinking about closing a school, they should first let students and staff debate, so they can have a voice about what happens to the school.
- They also should let students, parents, and staff know ahead of time and give them a chance to get their letter grade up.
- If a school is closing, they should make sure education keeps happening at the school for the students who are still there.

# Conclusion

- This project was based on how we felt as students and teachers on a topic that's rarely spoken about.
- School closure shouldn't be normalized.
- **Thank you for listening to how we feel.**